


# Shakuntala Electronics works Automation (SEWA)

Integrity and Reliability

Industrial Automation, Power Distribution  
SPECIAL PURPOSE MACHINES  
Robotic Welding and Automation Solutions

# Prelude

- **Shakuntala Electronics Works Automations** is an Electrical and Electronics Automation engineering company, with integration facility at Faridabad, a satellite township near New Delhi.
- As a manufacturer of a wide variety of Electrical Control Panels, Factory Automation, and SPMs, we have over 15+ Years of experience. Our sourced facilities include complete fabrication equipment, metal pre-treatment, and painting / Powder Coating facilities as well as assembly and wiring shops.

- 
- We started in Year 2008.
  - Complete Automation Design, Layout, Implementation and Testing is done at our works.
  - Our Sister Concern Sam Controls

## Our Systems Are Used In Following Brand Manufacturing Units





Products and Services

# ● **INDUSTRIAL CONTROL & SENSING DEVICES**

## Suppliers for brands:





**Planetary Gearheads**



**AC Drives**



**MV Drives**



**Motion Control  
Servo Drives and Motors**



**CNC Control Numerical  
Solutions**



**PC Based Motion Control  
Solutions**





**Complete Welding  
Solution OTC JAPAN**





**Programmable Logic  
Controller (PLC)**



**Touch Panels (HMI)**



**Text Panels (HMI)**



**Industrial Network  
Solutions**



**Industrial Ethernet  
Solutions**



**PIDs, Temp. Controllers,  
Profile Controllers**



**Machine Vision Systems**



**Pressure Sensors**



**Counter, Timers,  
Tachometers**



**Industrial Power Supply**



**Industrial Sensors**



**Foot Switches**



**Remote Pendants**



**Push Button Stations**



**Joysticks**



**Push Buttons**



**Wireless Push Buttons**



**Signalling Units**



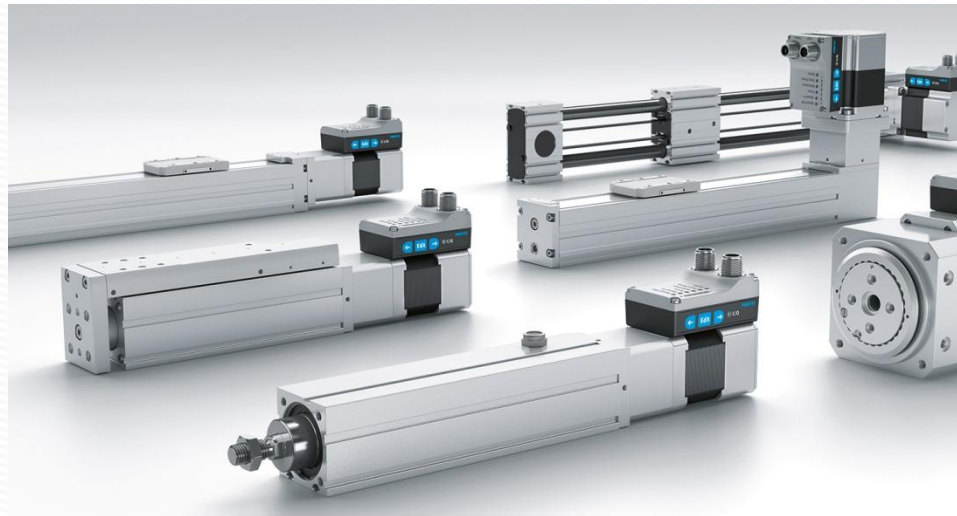
**Rotating Beacons**



**Rotary Encoders**



# Servo Actuators SMC & Festo







**Panel Enclosures**





**Motor Control Centre  
(MCC)**



**Mains Changeover Panel**

# POWER SAVER



**Hybrid Heating Control  
for Furnaces and Ovens**



# TESTING AND DISPLAY SOLUTIONS





**Intelligent Digital  
Networking Meters**



**Variac**

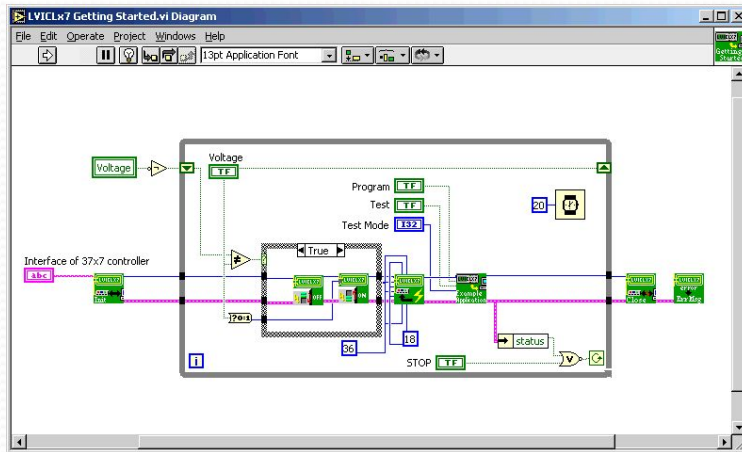




**Thermocouple  
and IR Sensors**

LINE PRODUCTION INFORMATION BOARD				
PANEL NO: 057611	EFF.(TAR)	94.0 %	DATE	
	EFF.(ACT.)	100 %	2303	
GSPH	TAR. 0464	CYCLE TIME (SEC.)	TAR. 6.45	
	ACT. 0520		ACT. 6.08	
	AVE. 430.4	A D C (MIN.)	TAR. 3.47	
TOTAL STROKE	TAR. 0240		ACT. 2.68	
	ACT. 0178	L.STOP (MIN.)	CUR. 000	
			TOT. 40.2	

**Customized Andon Boards**



# Real Time Data Analysis and Logging



# SPMs



**Atlas Copco Smart Screwdriver with Omron Camera Assembly Check SPM: YL7 (Maruti)**



## YXA Cable Assembly Line (SKH Group)





## VISION PART CHECKING



# Complete YL7 Assembly Line EOL





Cable Ball Socket Cap Load Check  
and Auto Greasing



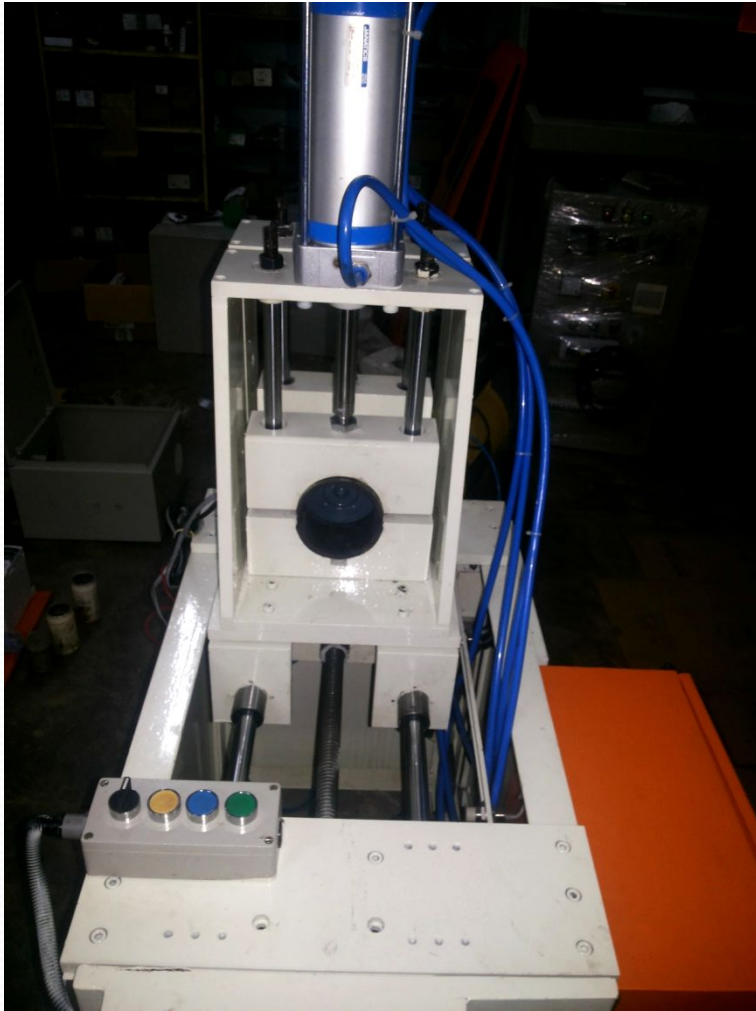
## **Auto Lock washer fixer with guide supports**





**Auto Riveting Fixture**






**Auto Cap Can Removal**

# A Few of our Projects

- **Corrugation 5-Ply and 3-Ply Plant Process Automation and Control.**
- **HYBRID Heat Control (Power Saver up to 30%)**
- **Complete Assembly and packaging lines for Automotive and other industries.**
- **Endurance and Lab testing SPMs.**
- **Data Loggers.**
- **Paint shop complete control system.**
- **Torque and load analysis.**
- **Online quality control systems.**
- **Online weighing systems.**
- **Auto loading machines.**
- **End Of Line Testers (EOLs)**
- **SCADA AUTOMATION.**
- **Line Traceability setup and systems.**
- **Pick and Place Setups.**
- **SCARA, Four Axis, Six Axis and other types of robot integration.**



- 
- **Plastic Extrusion Machines Controls.**
  - **Wire Drawing Machine Controls**
  - **Wire Annealing System Controls**
  - **Cable Winder / Un-winder System Controls.**
  - **Automotive Assembly lines.**
  - **GSLA Assembly and Testing Lines.**
  - **Cable Assembly and Testing Lines.**
  - **Switch Assembly and Testing Lines.**
  - **Lab SPM Machines.**
  - **Robotic Welding Assembly Cells and stations.**

### **Our clientele:**

- INDIA YAMAHA MOTORS PVT. LTD. Fbd.
- Honda Motors (ARL Engineers)
- Jay Ushin, Gurugram.
- Marathon Electric, Faridabad (Formerly GE Motors)
- Carrier Air-conditioning Pvt. Ltd. (Grg.)
- PPAP. (Greater Noida)
- Hyderabad Industries, Fbd.
- SKH Metals. (Maruti OEM)
- SKH SILA. (Maruti OEM)
- LUMAX Mannoh (Shifter)
- Konsberg Automotive (Shifter and Cable)
- Anand Group.
- Anand Mando.
- Himec, Faridabad.
- Tecumsheh, Faridabad.
- JCB Ballabhgarh.
- INDO Automotive Pvt. Ltd. (Automotive)
- New Holland Tractors (Sub contract)
- M/S Grandlay Cables, New Delhi (Power cables)
- ACE Cranes, Faridabad.
- M/s Sathyadeep Engg.
- Master Gratings.
- Economic Eng., Fbd (Powder Coating Plants)
- Sheetal Tanks, New Delhi.
- R. S. Eng. Fbd (Rotomoulding machines)
- Natraj industries, Fbd. (Corrugating plants)
- Sterling Tools Pvt. Ltd. (Fbd)

- CDTI Pvt Ltd. (Manesar)
- Natraj Machinery Pvt. Ltd., Fbd. (Corrugating plants)
- Nagpal Machinery Pvt. Ltd. Fbd. (Corrugating plants)
- Shweta Eng. , Fbd. (Rotomoulding Machines)
- Saraswati Eng., Fbd. (Cable Machines)
- Raman Eng. and Controls, Gurgaon.
- Cords Cable, New Delhi (Power cables) (Supplied)
- Lalit Electricals, Fbd. (Schneider Authourised Dealer, Reg. Vendor)
- AAR AAR Technoplast Pvt. Ltd. (Injection moulding m/c imported) (Reg. Vendor)
- Sai Nitish Enterprises. (Paint shop and Chemical Treatment)
- Guru Arjun Machine Tools, Faridabad. (Surface Grinders)
- Sarb Presses, Faridabad. (Heavy Power Presses)
- GTB Enterprises, Faridabad. (Cable Machinery Manufacturer)
- Gupta Overseas Agra. (1200KVA Automatic Distribution System)
- Talbros (Sub contract)
- Bhartia Cutler Hammer, Faridabad (Sub Contract).
- Mothersons Automotive (MATE) Noida (Sub Contract)
- Wheels India (Rampur) (Subcontract)
- Avon Containers (Paper Converting)

# **Software for Design and Development:** **Machine and Electrical**

3 D /2D – Designing and Implementation in Solid Works.

## **Automation Programming**

1. Mitsubishi : GX Developer, GX Works.
2. Siemens: TIA Portal
3. Delta: ISP, WPL, TextPanel, Servo Sequencer.
4. Omron : CX One.
5. Crouzet: PLR.
6. Micro Controllers: Arduino.
7. Real Time Data Analysis : National Instruments (NI)

# Contact:

- IMT, Near-Sec 68 & ALMICO, Faridabad (121004)
- Web: [www.shakuntalaelectronics.com](http://www.shakuntalaelectronics.com)
- Mail: shakuntala.elecworks@gmail.com,  
info@shakuntalaelectronics.com
- Ph: 09811871256, 09810762559

Certifications:

MSME Registered.